

January 28, 2020

Dear Neighbor,

Over the past year, we have been building the Seacoast Reliability Project which is a new, 13 mile powerline from Madbury through Durham and Newington and into Portsmouth. In Durham, the powerline corridor where we are constructing this powerline, crosses through the Sandy Brook neighborhood. Once the construction is complete in the area, disturbed areas will be restored. In many cases, we've been working with landowners throughout the corridor to develop landscaping plans to assist with visual screening. The Sandy Brook Community Common Land (referred to as "Common Land") is one of those properties where we would like to develop a landscaping plan.

Some preliminary discussions have taken place between Eversource and some of the Sandy Brook Drive neighbors regarding the landscaping plan for the Common Land. As part of those discussions, one of your neighbors, Ms. Hammond, developed a proposed landscaping plan for the Common Land. We appreciate Ms. Hammond's efforts to develop this proposed plan. Our team reviewed that plan and provided initial feedback.

Subsequently, we received a letter from the Sandy Brook neighborhood indicating a preference for Ms. Hammond's proposed plan (referred to as "Initial Plan"). As a result, our team re-reviewed our initial feedback on the plan, keeping in mind the neighborhood's preference for plant diversity, corridor placement, pesticide-free stock and desire to preserve and restore the wooded nature of the neighborhood. As a result of that feedback, we've developed the proposed planting plan (referred to as "Proposed Plan") attached for your review, with as minimal variation as possible from the Initial Plan. In areas where we proposed something different from that Initial Plan, we've provided an explanation below.

### **Plant Species**

When selecting plant species for landscaping plans, one important criteria that we must consider are whether the species could conflict with the safe operation, maintenance and reliability of the powerline. In addition, we recommend plantings that are native, hardy, and generally low-maintenance, creating a higher likelihood of survival and a sustainable visual buffer.

Taking this into consideration, our arborist and landscaper reviewed the Initial Plan and found that some of the preferred plants include species that are not native to the existing plants in the Common Land, such as the Lilac variety, Juniper species and Smokebush. While these plants were included on the list of compliant plants in the powerline corridor provided to the Sandy Brook neighbors at the October 22, 2019, site meeting, these are typically better suited for a maintained residential property as compared to a wooded area.

### Plant Species Recommendation

To increase the survival rate of the plants and the effectiveness of creating a visual buffer from the roadway, we recommend replacing the species above with Common lilac (*Syringa vulgaris*), Arrowwood Viburnum (*Viburnum dentatum*), Bayberry (*Myrica pensylvanica*), Silky Dogwood (*Cornus amomum*), or Chokeberry (*Aronia arbutifolia*) as substitute species more suited to the wooded location. While we recommend this species revision to the Initial Plan, it's not reflected in the Proposed Plan due to our attempt to keep the plan as close to the Initial Plan as possible; however, we ask that these revisions are considered by the neighbors.

**Recommended Plant Species**

Common lilac (*Syringa vulgaris*)



Arrowwood Viburnum (*Viburnum dentatum*)



Bayberry (*Myrica pensylvanica*)



Silky Dogwood (*Cornus amomum*)



Chokeberry (*Aronia arbutifolia*)



**Wildflowers – Seed Mix and Relocation**Seed Mix - Recommendation

A wildflower seed mix was requested in the Initial Plan. We have extensive history using a specific seed mix that has been very successful for use in powerline corridors. While different from what was proposed, it is still a wildflower mix which we purchase from New England Wetland Plants, Inc. Their product has been used successfully in other utility rights of way throughout the state, and the combination of flowers and grasses will provide a species mosaic suited to establishing native groundcover as well as pollinator habitat which is consistent with what was requested in the Initial Plan.

Seed Location - Recommendation

In the Initial Plan, the wildflower seeding was proposed in a location further down the powerline corridor with limited visibility from Sandy Brook Drive. To increase the chances of survival and visibility of the wildflowers, we propose relocating the wildflower seeding from further down the powerline corridor to closer to the road among the proposed new plantings. In addition, it would reestablish resources for pollinators and other beneficial wildlife. Both the slight variation in wildflower seed mix and relocation are reflected in the Proposed Plan.

**Willow Fence – Relocation**Location of Willows – Recommendation

In the Initial Plan, a willow fence was proposed near a wetland in the interior of the Common Land and is a significant distance from the roadway. With the fence proposed so far into the powerline corridor it would be minimally visible from Sandy Brook as a visual buffer and therefore we recommend the willow fence be moved closer to the road to provide a more effective visual buffer. This change is reflected in the Proposed Plan.

**Plant Maintenance**

For plant maintenance, Eversource follows landscaping standard industry practices, and arranges for a one-year, one-time replacement warranty. Typically, the warranty provisions require the property owner to care and water the new plantings. However, given the challenges with watering at the site and the neighbors' request for assistance in that effort, we're willing to provide watering for this location for one year. In most cases, plantings will not require watering after one year once established.

**Pesticide Free Plants**

We understand the preference for pesticide free plants although at this time, however, it cannot be guaranteed that all plantings will be pesticide free. This is a factor dependent on where plant species are sourced from the landscape contractor, however this preference will be communicated to the landscape contractor when sourcing their plant supply.

Given these considerations, Eversource requests your feedback to the attached Proposed Plan by February 13, 2020. Please direct your comments to [NHProjectsInfo@eversource.com](mailto:NHProjectsInfo@eversource.com) or call 1-888-926-5334. As we receive feedback, we will respond to each neighbor to discuss his/her preferences. Following those individual discussions, a revised plan will be distributed to the neighborhood in late February. Ultimately, our intent is to implement the landscaping plan during the spring 2020 season.

We appreciate the opportunity to continue working with you on the landscaping plan for your neighborhood as we complete this important reliability project.

Thank you.

Sincerely,

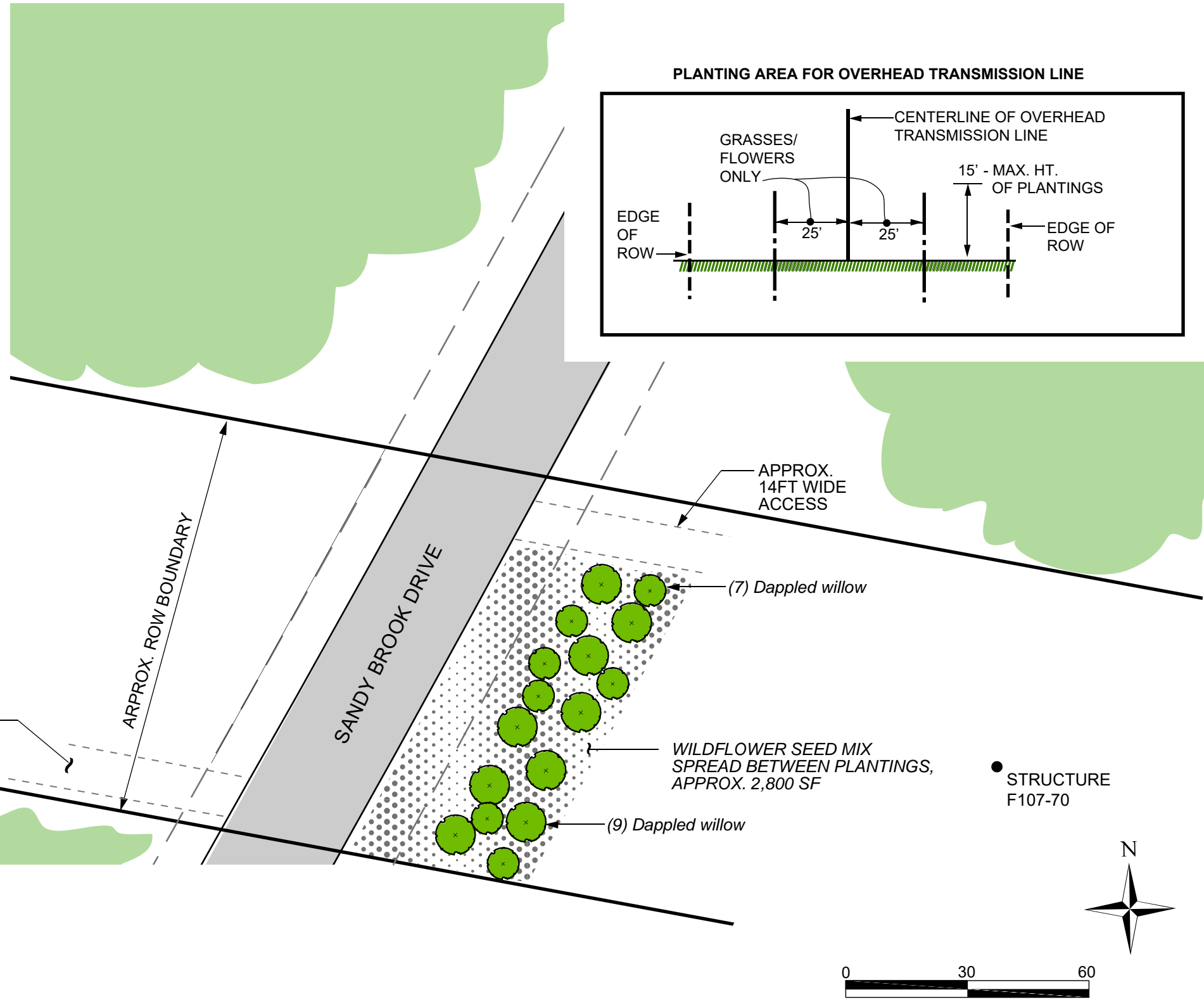


Sandra Gagnon  
Eversource Senior, Project Manager - Siting and Construction Services

Cc: Pamela Monroe, New Hampshire Site Evaluation Committee  
Christopher Aslin, Counsel for the Public

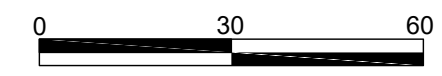
**NOTES:**

1. All locations and delineations are approximate only and based on available drawings, aerial photos, and site information.
2. Dimensions and representations to be verified as follows: Eversource right-of-way/structures and other project related information to be verified by Eversource; Private property information to be verified by property owner.
3. Utilities and other site factors need to be verified in the field prior to installation of plantings or other mitigation.
4. Planting locations are approximate. All plant locations to be verified on site prior to installation.
5. Final plantings, locations, and specifications to be provided to property owner for review and approval.
6. Specific planting varieties are subject to availability of planting stock. If requested varieties are unavailable a suitable replacement will be decided between Eversource and the property owner.
7. Maintenance of plantings, such as watering, will be the responsibility of Eversource for one year plantings are installed. Eversource will provide maintenance and care instructions.
8. All mitigation plantings installed by Eversource include a one-year warranty for planting survival in circumstances other than: under or over-watering, insect damage, snow damage, or natural disaster.
9. No plantings will be installed within a 25-foot radius of overhead line structure footings.
10. Limited plantings with a maximum mature height of 15-feet can be installed in the remainder of the right-of-way.
11. An area/opening a minimum of 14-feet wide will be maintained for Eversource operations access to the right-of-way at road crossings, per the easement.



**PLANT LIST**

Quan.	Latin Name	Common Name	Size	Planting Depth
7	Salix integra 'Hakuro nishiki'	Dappled Willow	5 gallon	9 in. depth
9	Salix integra 'Hakuro nishiki'	Dappled Willow	10 gallon	15 in. depth



**SEACOAST RELIABILITY PROJECT  
DURHAM, NH  
SANDY BROOK DRIVE (WEST)  
LANDSCAPE MITIGATION PLAN**



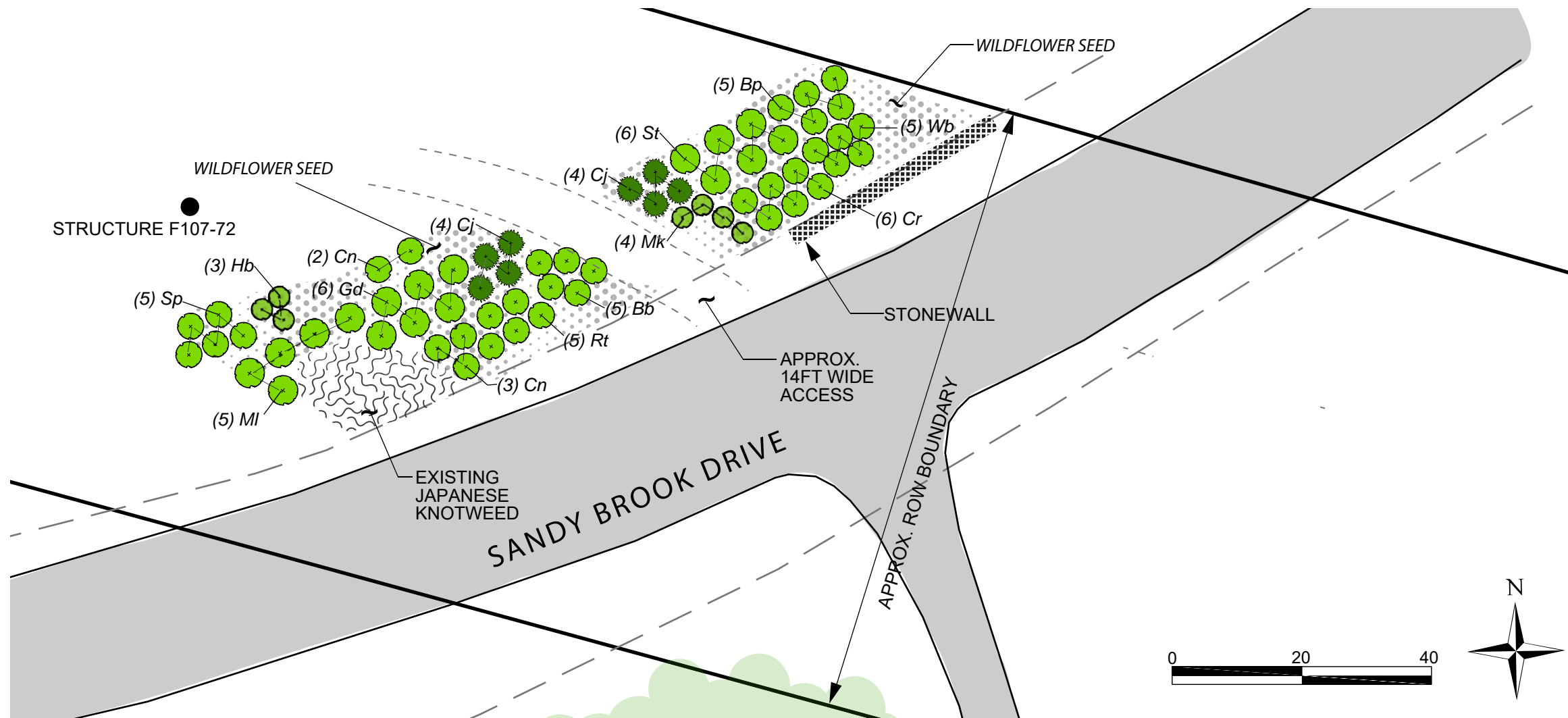
SCALE: 1 in. = 30 ft.  
DATE: JANUARY 23, 2020  
PROJECT NO.: 04.0190999.01

FIGURE:

**1**

**NOTES:**

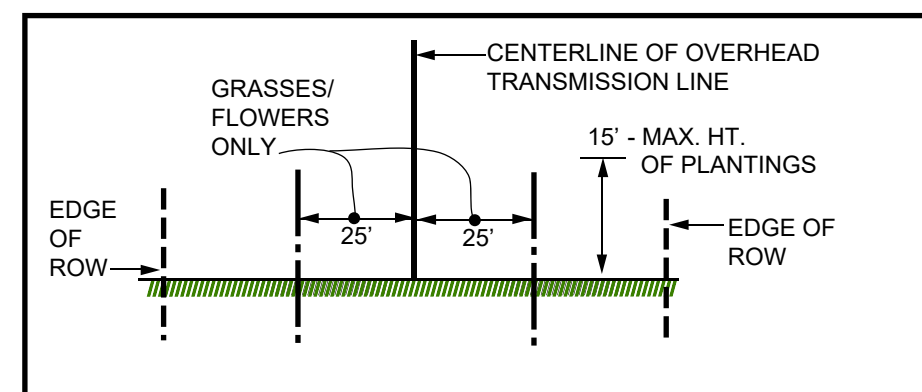
1. All locations and delineations are approximate only and based on available drawings, aerial photos, and site information.
2. Dimensions and representations to be verified as follows: Eversource right-of-way/structures and other project related information to be verified by Eversource; Private property information to be verified by property owner.
3. Utilities and other site factors need to be verified in the field prior to installation of plantings or other mitigation.
4. Planting locations are approximate. All plant locations to be verified on site prior to installation.
5. Final plantings, locations, and specifications to be provided to property owner for review and approval.
6. Specific planting varieties are subject to availability of planting stock. If requested varieties are unavailable a suitable replacement will be decided between Eversource and the property owner.
7. Maintenance of plantings, such as watering, will be the responsibility of Eversource for one year plantings are installed. Eversource will provide maintenance and care instructions.
8. All mitigation plantings installed by Eversource include a one-year warranty for planting survival in circumstances other than: under or over-watering, insect damage, snow damage, or natural disaster.
9. No plantings will be installed within a 25-foot radius of overhead line structure footings.
10. Limited plantings with a maximum mature height of 15-feet can be installed in the remainder of the right-of-way.
11. An area/opening a minimum of 14-feet wide will be maintained for Eversource operations access to the right-of-way at road crossings however alternative access may be utilized, as needed.



**PLANT LIST**

Sym.	Quan.	Latin Name	Common Name	Size	Planting Depth
MI	5	<i>Kalmia latifolia</i>	Mountain Laurel	3-4' height	1.5 ft. depth
Gd	6	<i>Cornus racemosa</i>	Grey Dogwood	3 gallon	9 in. depth
Cj	4	<i>Juniperus chinensis 'Hetzii columnaris'</i>	Columnar Juniper	5-6' height	2 ft. depth
Bb	5	<i>Vaccinium corymbosum</i>	Highbush Blueberry	5 gallon	9 in. depth
Rt	5	<i>Cornus sericea</i>	Red Twig Dogwood	5 gallon	9 in. depth
Cn	5	<i>Physocarpus opulifolius</i>	Common Ninebark	5 gallon	9 in. depth
Sb	5	<i>Lindera benzoin</i>	Spicebush	5 gallon	9 in. depth
Hb	3	<i>Gaylussacia spp</i>	Huckleberry	3-4' height	1.5 ft. depth
St	6	<i>Cotinus coggygia</i>	Smokebush	5 gallon	9 in. depth
Bp	5	<i>Juniperus chinensis 'Blue Point'</i>	'Blue Point' Juniper	5-6' height	2 ft. depth
Wb	5	<i>Ilex verticillata</i>	Winterberry	3-4' height	1.5 ft. depth
Cr	6	<i>Rosa carolina</i>	Carolina Rose	2 gallon	9 in. depth
Mk	4	<i>Syringa patula 'Miss Kim'</i>	'Miss Kim' Lilac	5 gallon	9 in. depth

**PLANTING AREA FOR OVERHEAD TRANSMISSION LINE**



**SEACOAST RELIABILITY PROJECT  
DURHAM, NH  
SANDY BROOK DRIVE (EAST)  
LANDSCAPE MITIGATION PLAN**



SCALE: 1 in. = 30 ft.  
DATE: January 23, 2020  
PROJECT NO.: 04.0190999.01

FIGURE:

**2**